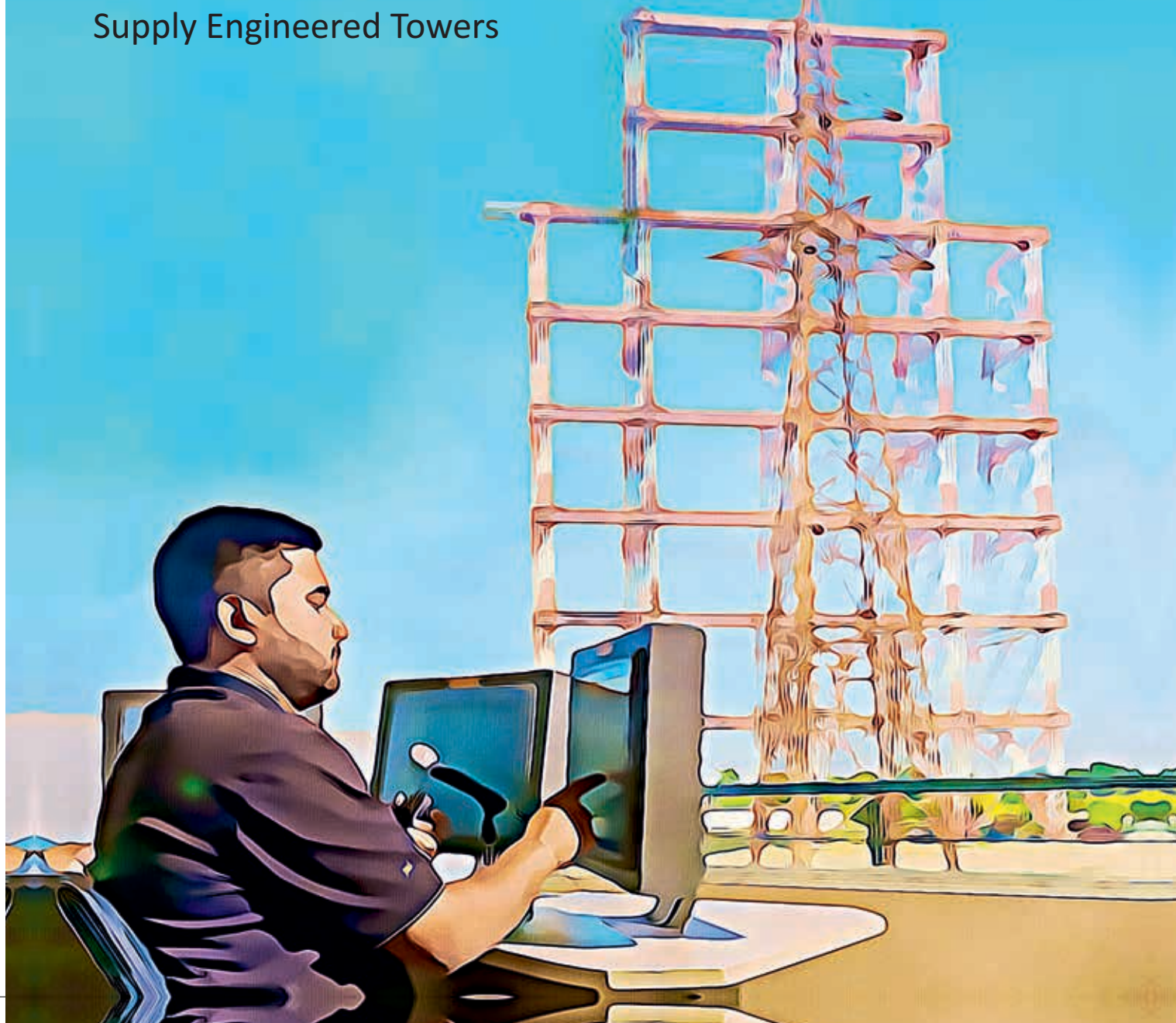


In-house Capability to
Supply Engineered Towers

TRANSRAIL



Transrail Lighting Limited has a Tower testing and R&D station with sophisticated equipment and vastly experienced engineers that makes it the one of the most successful testing facility for customers across the globe.

TOWERS TESTED			
AMERICAS	37	ASIA	39
AFRICA	99	INDIA	140
TOTAL 315			

Features:

- Tower testing facility is fully automatic with Supervisory Control & Data Acquisition (SCADA) software technology. It is recognised as 'In-house R&D Centre' by GoI, Ministry of Science and Technology and is accredited by NABL (National Accreditation Board for Testing and Calibration Laboratories).
- Testing Capacity:
 - ✓ Towers with width of 30 Mtr, Height of 90 Mtr and multiple loading points upto 62.
 - ✓ Self-Supporting towers upto 1200 kV
 - ✓ Guyed Towers upto 765 kV
 - ✓ Chainette/Cross Rope Towers upto 735 kV
 - ✓ Transmission monopoles upto 500 kV
- Tower crane 92Mtrs. High with lifting capacity 16MT for Erection and Dismantling of test tower.
- Touch Screen Based compact Central Control station for application of Loading
- Tree Structure Test Load digital display for Viewers
- Recording of testing activity by close circuit cameras at different locations
- Capability to erect two towers simultaneously





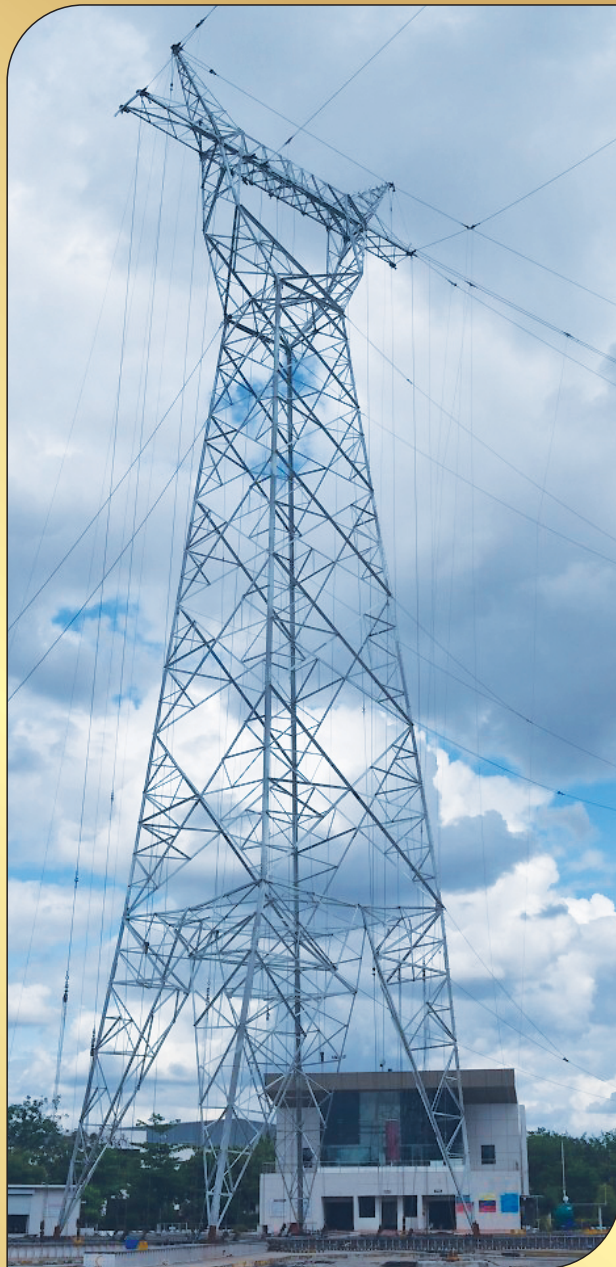
**500 kV HVDC BI-POLAR TOWER
FOR AECOM CO. CANADA**



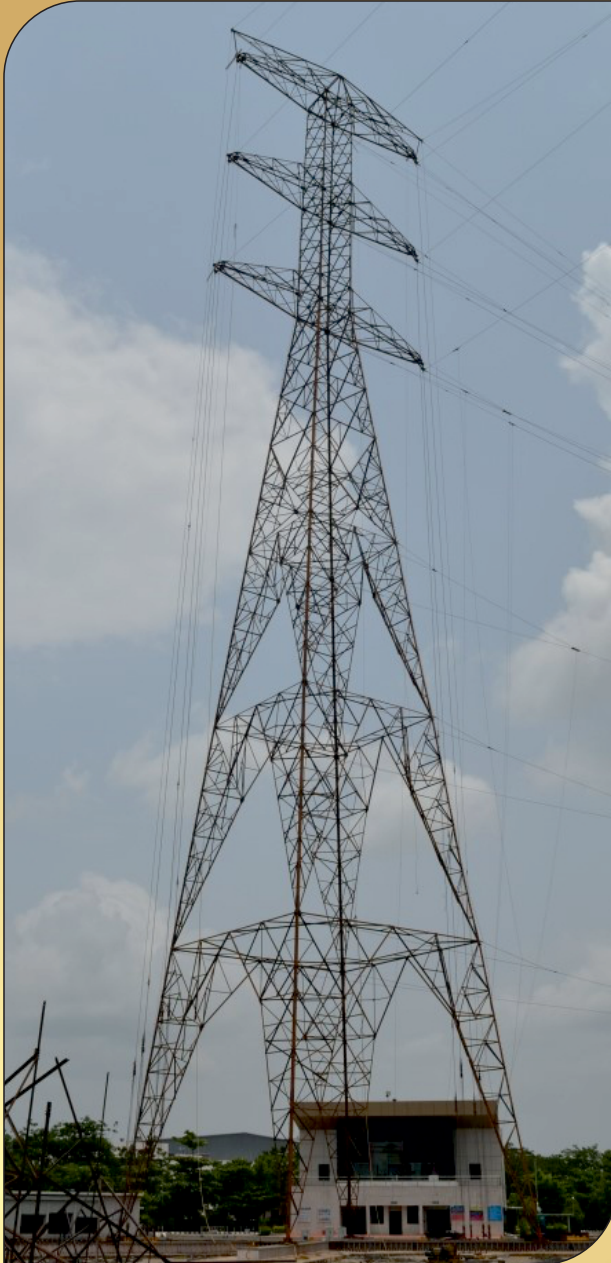
**735 kV S/C GUYED TOWER
FOR HYDRO QUEBEC, CANADA**



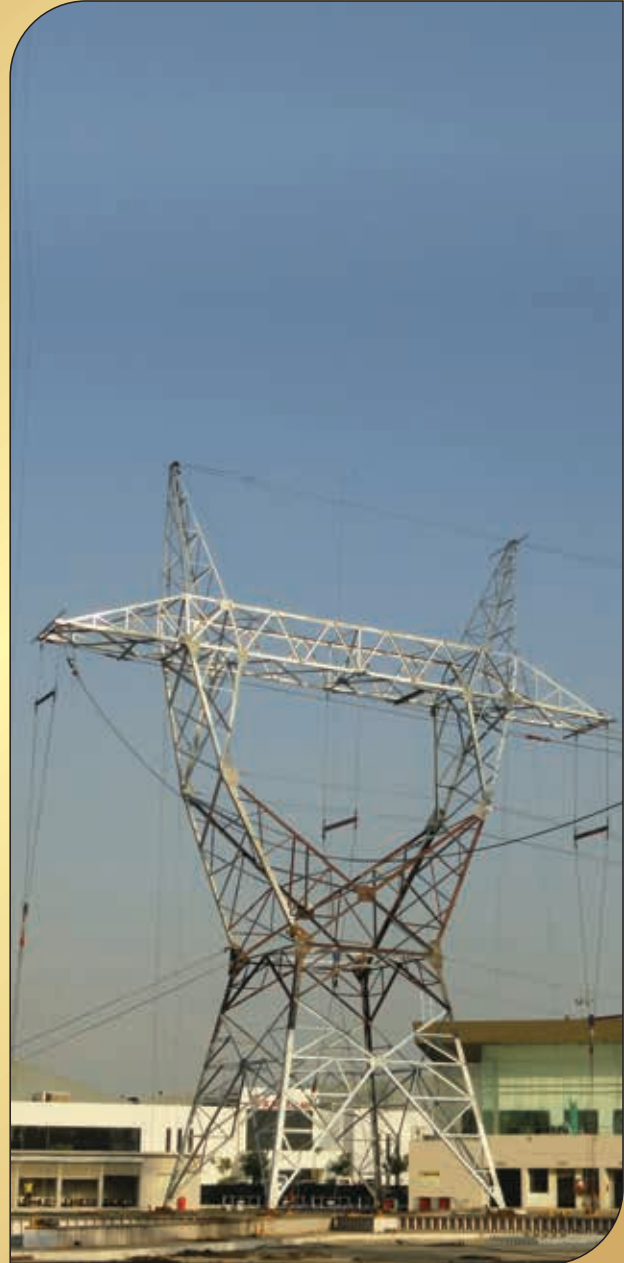
**315 kV D/C TOWER FOR
HYDRO QUBEC, CANADA**



**315 kV S/C TOWER FOR
HYDRO QUBEC, CANADA**



**500 kV DC TOWER (92 Mtr. High)
FOR GRUPO ENERGIA, COLUMBIA**



**400 kV S/C TOWER
FOR BOTSWANA POWER CORPORATION**



**275 kV D/C TOWER FOR
TRENERGY INFRASTRUCTURE SDN BHD, MALAYSIA**



**275/132 kV M/C MONOPOLE FOR
ROHAS-EUCO INDUSTRIES BHD, MALAYSIA**



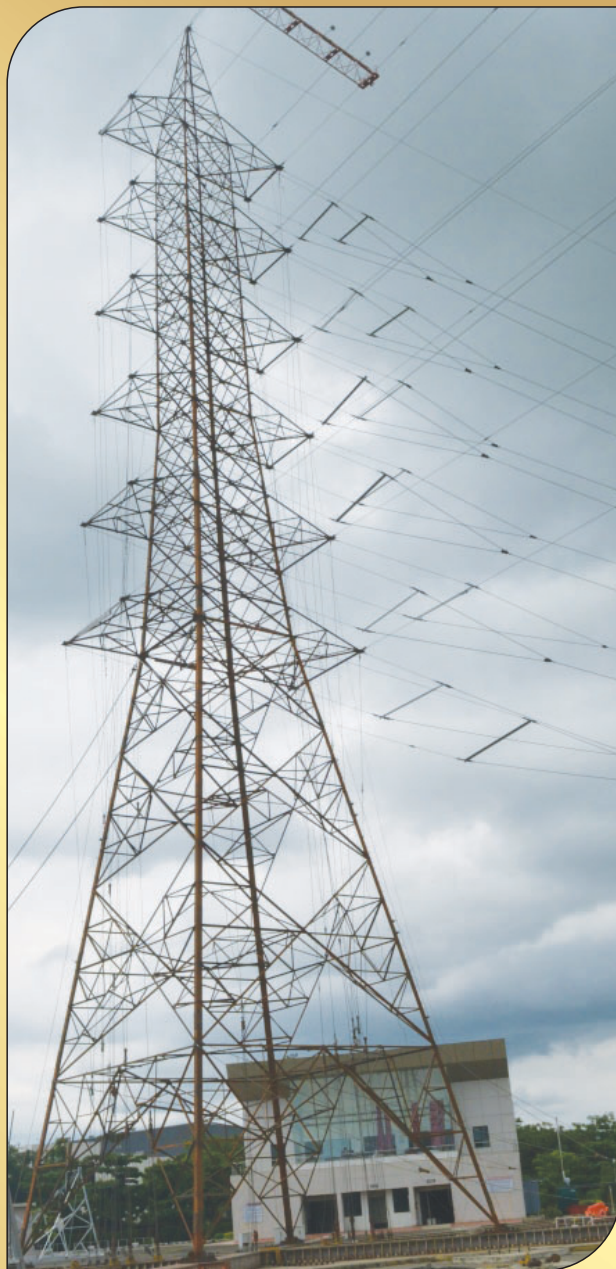
735 KV S/C CROSS-ROPE CHAINNETTE TYPE GUYED TOWER FOR HYDRO QUEBEC, CANADA



TUBULAR RAILWAY PORTAL FOR MAHA METRO RAIL CORPORATION, INDIA



**500 kV S/C TOWER FOR
DA AFGHANISTAN BRESHA SHERKAT, AFGHANISTAN**



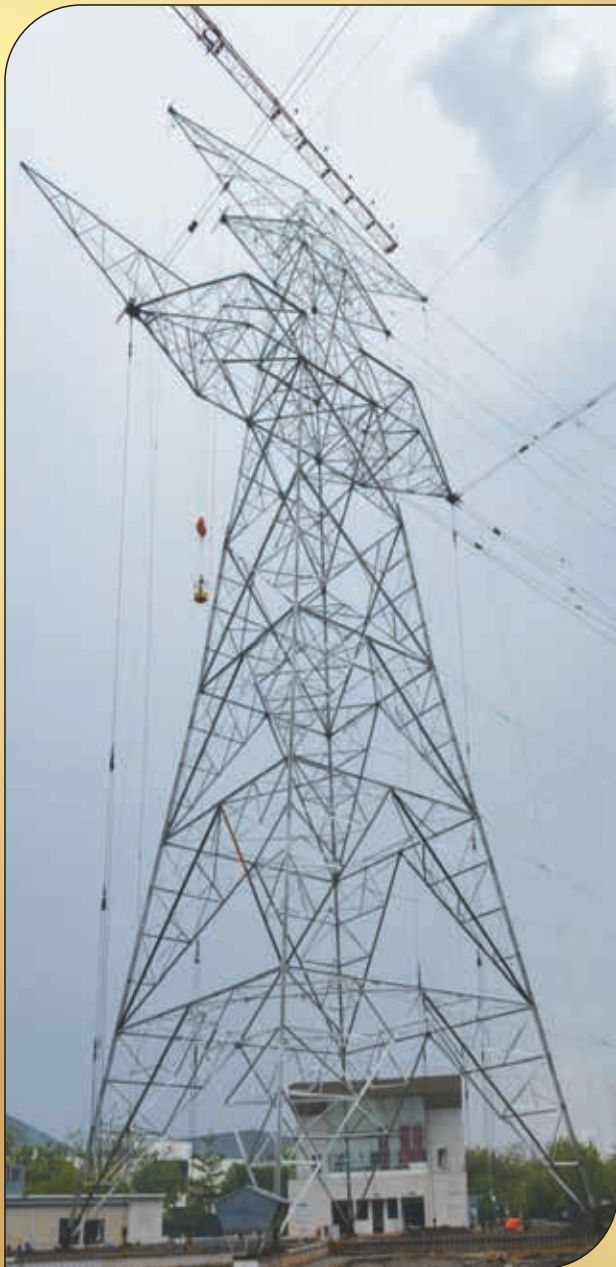
220 kV MULTI CIRCUIT TOWER, INDIA



**765 kV S/C TOWER
FOR ADANI POWERS LTD., INDIA**



**765 kV D/C TOWER
FOR ADANI POWERS LTD., INDIA**



**800 kV HVDC TOWER FOR
POWER GRID CORPORATION OF INDIA LTD.**



**400 kV D/C TOWER FOR
KENYA ELECTRICITY TRANSMISSION CO. LTD.**

Transrail Lighting Limited (Transrail) is an integrated infrastructure company offering turnkey solutions in the areas of transmission, distribution, substation, railway electrification and lighting infrastructure across the globe.

We offer comprehensive solutions right from design, testing, manufacturing, supply of materials, and construction across our business verticals.

Our Other Business Segments



Transmission lines



Distribution lines



Lighting
Infrastructure



Civil structures



Substations



Railway Electrification



Broadband distribution
network



CORPORATE OFFICE

Transrail Lighting Limited

A Wing, 5th Floor, Fortune 2000,
Block G, Bandra Kurla Complex, Bandra East,
Mumbai – 400 051, India
Phone: +91-22-6197 9600
Fax: +91-22-6197 9666
Website: www.transrail.in
Email: enquiry@transraillighting.com

TOWER TESTING STATION

B-1/1, MIDC Growth Centre,
Deoli, Wardha – 442101,
Maharashtra, India
Phone: +91-7158 203308/9

MANUFACTURING UNITS

Deoli Plant (Towers)

B-1/1, MIDC Growth Centre,
Deoli, Wardha – 442101,
Maharashtra, India
Phone: +91-7158 203308/9

Vadodara Plant (Towers)

Vadadla, Jarod-Samlaya Road,
Taluka – Savli,
Vadodara – 391520,
Gujarat, India
Phone: +91- 787 4798 535

Silvassa Plant (Conductors)

Survey No.:178/182,
Village – Amboli,
Silvassa – 396230, (D&NH), India
Phone: +91-260-3086 305

Silvassa Plant (Poles)

Survey No. 227, Khanvel-Khardi Road,
Village – Khardi,
Silvassa – 396230, (D&NH), India
Phone: +91-260-2641 666

Follow us on:

